



MODEL 2025E

13 LBF MODAL SHAKER

- Through-hole armature with chuck and collet attachment provides simple set-up with modal stingers
- Lightweight and portable – weighing just 13 lb (6 kg) with an approximately 5 in (125 mm) square footprint
- Trunnion base provides flexibility when choosing best exciter location(s)
- 0.7 in stroke and broad frequency range supply adequate input energy for most small to mid-sized modal test applications
- Ambient air cooling sufficient to meet full shaker performance (13 lbf_{pk}) specifications

MODAL TESTING

For many experimental modal test applications, an electrodynamic shaker system is best suited for creating an appropriate input forcing function. Distributing adequate input force energy across the test structure and obtaining accurate and reliable input force measurements is critical for successful modal testing. This requires a shaker that is highly portable, rugged and easy to set up in order to position in the best exciter location while minimizing any unwanted interaction between the exciter and test structure.

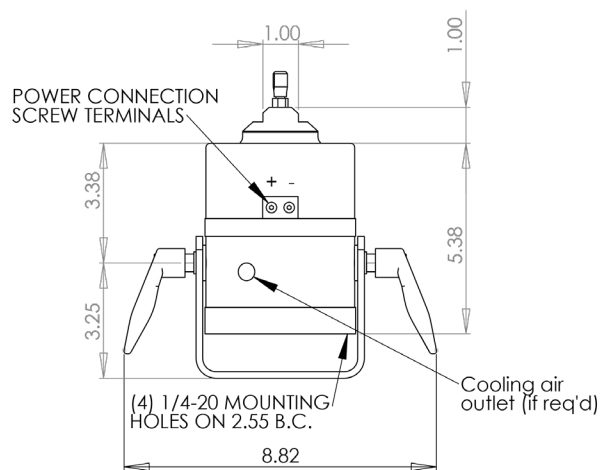
The Modal Shop's Modal Shaker Model 2025E, a very lightweight electrodynamic modal exciter, is capable of providing up to 13 lbf (58 N) of peak force excitation in a small footprint weighing just 13 lb (6 kg). With a 0.7 in (18 mm) general purpose stroke and useful frequency range beyond 9 kHz, the 2025E is suitable for structural testing and experimental modal analysis applications, including single and multiple inputs (SIMO and MIMO) using random, burst random, sine dwell or chirp excitation signals.

The 2025E modal exciter is supplied in a trunnion base allowing full rotation for easy set-up. The through-hole armature design with chuck and collet attachment is ideal for use with either traditional modal stinger rods or piano wire stingers. These stingers greatly simplify test set-up with an easy connection to the force sensor and test structure, and help decouple cross-axis force inputs, minimizing input force measurement errors while using the modal shaker.

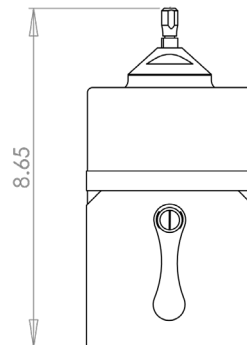
| SPECIFICATIONS | |
|---|--|
| Performance | |
| Output Force, sine pk, ambient air cooling | 13 lb (58 N) |
| Stroke Length, pk-pk | 0.7 in (18 mm) ^[1] |
| Frequency Range, nominal | DC - 9000 Hz ^{[2],[3]} |
| First Resonance Frequency, nominal | > 6000 Hz ^[3] |
| Maximum Acceleration, bare table | 72 g (700 m/s ²) pk |
| Maximum Velocity | 120 in/s (3 m/s) pk |
| Protection Features | Mechanical stops |
| | Over-current (in-line fuse) |
| Physical | |
| Maximum Current, ambient air cooling | 12.5 A RMS |
| DC Resistance, armature, nominal | 0.5 Ω ^[4] |
| Armature Suspension System | 8 pcs carbon fiber composite flexures |
| Effective Armature Mass | 0.35 lb (0.159 kg) |
| Dimensions (H x W x D), nominal | 8.65 x 8.82 x 4.25 in (220 x 224 x 108 mm) ^[5] |
| Weight, nominal | 13 lb (6 kg) |
| Operating Range | 40 – 100 °F (4 – 38 °C), < 85% RH |
| Supplied Accessories | |
| Trunnion base with EasyTurn™ handles | |
| Shaker cable 10 ft (3 m) | |
| Chuck with collets | |
| 10-32 mounting adaptor | |
| Variety of rod and piano wire stinger kits (Models 2150G12, 2155G12 and K2160G) | |
| Suggested Accessories | |
| 2100E21-400 | SmartAmp™ Power Amplifier 400 W, 92% efficient, continuous gain adjustment |
| PCB 288D01 | ICP® impedance head driving point sensor |
| PCB 208 | PCB 208 series ICP® force sensors |

- [1] Mechanical stops at 0.75 in (19 mm).
 [2] Frequency range based upon ISO 5344 recommended useful range of 1.5 times first resonance frequency.
 [3] Load dependent.
 [4] Room temperature, 68 °F (20 °C).
 [5] Reference outline drawing for exact dimensions.

Front left photo taken in cooperation with Belgian Defense



Model 2025E - Front View
Dimensions in inches



Model 2025E - Side View
Dimensions in inches

THE MODAL SHOP
MTS SYSTEMS CORPORATION

3149 E Kemper Rd, Cincinnati, OH 45241 USA

Toll-Free in the USA: 800 860 4867

Phone: 1 513 351 9919 | Email: info@modalshop.com

The Modal Shop, Inc. offers structural vibration and acoustic sensing systems and services for various applications in design and test laboratories as well as manufacturing plants. An extensive sound and vibration rental program, precision calibration systems, and both modal and vibration shakers are designed to simplify test phases. Non Destructive Testing Systems help manufacturers provide 100% quality inspection of metal components. The Modal Shop, Inc. is a subsidiary of PCB Piezotronics, Inc., and PCB® is a wholly owned subsidiary of MTS Systems Corporation.

© 2019 The Modal Shop, Inc. In the interest of constant product improvement, specifications are subject to change without notice. PCB®, ICP®, Swiveler®, Modally Tuned®, and IMI® with associated logo are registered trademarks of PCB Piezotronics, Inc. in the United States. ICP® is a registered trademark of PCB Piezotronics Europe GmbH in Germany and other countries. UHT-12™ is a trademark of PCB Piezotronics, Inc. SensorLine™ is a service mark of PCB Piezotronics, Inc. SWIFT® is a registered trademark of MTS Systems Corporation in the United States. All other trademarks are property of their respective owners.



MTS Sensors, a division of MTS Systems Corporation (NASDAQ: MTSC), vastly expanded its range of products and solutions after MTS acquired PCB Piezotronics, Inc. in July, 2016. PCB Piezotronics, Inc. is a wholly owned subsidiary of MTS Systems Corp.; IMI Sensors and Larson Davis are divisions of PCB Piezotronics, Inc.; Accumetrics, Inc. and The Modal Shop, Inc. are subsidiaries of PCB Piezotronics, Inc.